

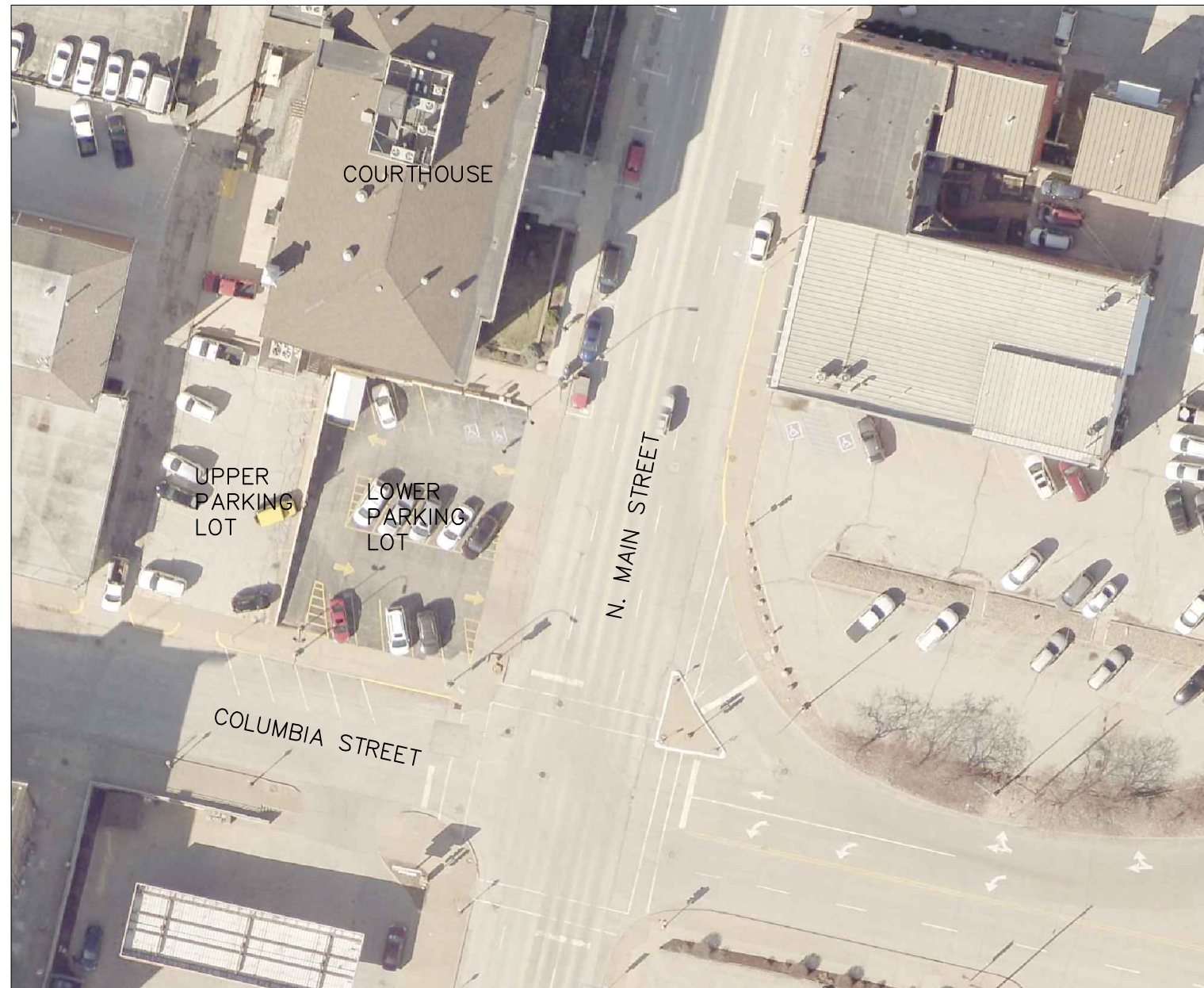
COURTHOUSE PARKING LOTS

DES MOINES COUNTY

COURTHOUSE PARKING LOTS

LOCATION: DES MOINES COUNTY COURTHOUSE
 513 N. MAIN STREET
 BURLINGTON, IA 52601

| INDEX OF SHEETS | |
|-----------------|--|
| No. | Description |
| A.01 | Title Sheet |
| C.01 | Estimate of Quantities and General information |
| D.01-D.02 | DIV. 1 Upper Parking Lot Plan and Details |
| D.03 | DIV. 2 Sidewalk Plan |
| D.04-D.05 | DIV. 3 Lower Parking Lot Plan and Details |



DES MOINES COUNTY

Scales: As Noted

STANDARD SPECIFICATION NOTE
 "Refer to the Proposal Form for list of applicable specifications"



ESTIMATED PROJECT QUANTITIES

| ITEM NO. | ITEM CODE | ITEM DESCRIPTION | UNITS | DIV. 1 | DIV. 2 | DIV. 3 | TOTAL |
|----------|--------------|--|-------|--------|--------|--------|-------|
| 1 | 2102-2710090 | EXCAVATION, CLASS 10, WASTE | SY | 490 | 65 | 687 | 1242 |
| 2 | 2111-8174100 | GRANULAR SUBBASE | SY | 490 | 65 | 687 | 1242 |
| 3 | 2301-1033060 | STANDARD OR SLIP FORM PORTLAND CEMENT CONCRETE PAVEMENT CLASS C, CLASS 3 DURABILITY, 6 IN. | SY | 490 | - | 687 | 1177 |
| 4 | 2510-6745850 | REMOVAL OF PAVEMENT | SY | 490 | 65 | 687 | 1242 |
| 5 | 2511-7526005 | SIDEWALK, P.C. CONCRETE 5 IN. | SY | - | 65 | - | 65 |
| 6 | 2527-9263109 | PAINTED PAVEMENT MARKINGS, WATERBORNE OR SOLVENT-BASED | STA | 3.67 | - | 5.26 | 8.93 |
| 7 | 2599-9999010 | LUMP SUM ITEM - UPPER STAIR LANDING, POLE BASE | LS | 1 | - | - | 1 |

ESTIMATE REFERENCE INFORMATION

| Item No. | Description |
|----------|--|
| 1 | <p>EXCAVATION, CLASS 10, WASTE CONTRACTOR IS RESPONSIBLE FOR EXCAVATING, LOADING, HAULING, WASTE MATERIAL THAT WILL BE EXCAVATED ONCE PAVEMENT HAS BEEN REMOVED. DEPTH COULD VARY DEPENDING EXISTING SURFACE THICKNESS. CONTRACTOR IS TO EXCAVATE MATERIAL TO BOTTOM OF GRANULAR SUBBASE DEPTH. NO OVERPAYMENT FOR OVERHAUL WILL BE ALLOWED. TYPE "A" COMPACTION WILL BE REQUIRED. APPROXIMATE MATERIAL FOR DIV. 1 IS 130 CY, DIV. 2 IS 5 CY, AND DIV. 3 IS 154 CY.</p> |
| 2 | <p>GRANULAR SUBBASE CONTRACTOR IS RESPONSIBLE FOR HAULING, PLACING, AND COMPACTING OF SUBBASE. A MINIMUM OF 6 INCHES SHALL BE PLACED IN DIVISION 1 AND 3. DIVISION 3 MAY REQUIRE MORE THAN 6 INCHES IN THE SW CORNER OF PARKING LOT DUE TO ELEVATION CHANGE. A MINIMUM OF 3 INCHES SHALL BE PLACED UNDER THE SIDEWALK IN DIVISION 2. APPROXIMATE TONNAGE IN DIV. 1 IS 186 TONS, DIV. 2 IS 10 TON, AND DIV. 3 IS 260 TONS.</p> |
| 3 | <p>STANDARD OR SLIP FORM PORTLAND CEMENT CONCRETE PAVEMENT CLASS C, CLASS 3 DURABILITY, 6 IN. REFER TO D SHEETS FOR DETAILS AND LOCATIONS. THIS QUANTITY INCLUDES PCC PAVEMENT FOR DIVISIONS 1 AND 3, A GRID OF No. 4 REBAR SHALL BE PLACED ON 3 FOOT CENTER IN DIVISION 1 AND 3, ADDITIONAL REBAR TO BE USED TO DOWEL INTO EXISTING PAVEMENT, SPECIAL CURB DETAIL. CONCRETE SHALL HAVE AIR ENTRAINMENT WITH AIR CONTENT BETWEEN 5.5% AND 8.5%. ALL JOINTS SHALL BE AS INDICATED HEREON AND OTHER DETAILS INCLUDED IN THE PLANS. JOINTS WILL CLEANED AND SEALED WITH HOT POURED JOINT SEALER. REFER TO IOWA DOT STANDARD SPECIFICATION 4136.</p> |
| 4 | <p>REMOVAL OF PAVEMENT THIS QUANTITY INCLUDES REMOVING ALL CONCRETE AND ASPHALT PAVEMENT WITHIN THE PROJECT LIMITS. CONTRACTOR WILL REMOVE AND DISPOSE OF REMOVED MATERIAL. THIS QUANTITY IS FOR ALL DIVISIONS.</p> |
| 5 | <p>SIDEWALK, P.C. CONCRETE 5 IN. REFER TO D SHEETS FOR DETAILS AND LOCATIONS. THIS QUANTITY INCLUDES PCC PAVEMENT FOR DIVISION 2, CONTRACTOR SHALL TIE IN TO EXISTING ADJACENT PAVEMENT, CONCRETE SHALL HAVE AIR ENTRAINMENT WITH AIR CONTENT BETWEEN 5.5% AND 8.5%. ALL JOINTS SHALL BE AS INDICATED HEREON AND OTHER DETAILS INCLUDED IN THE PLANS. JOINTS WILL CLEANED AND SEALED WITH HOT POURED JOINT SEALER. REFER TO IOWA DOT STANDARD SPECIFICATION 4136.</p> |
| 6 | <p>PAINTED PAVEMENT MARKINGS, WATERBOURNE OR SOLVENT-BASED REFER TO D SHEETS FOR DETAILS AND LOCATIONS. WIDTH OF PAINTED LINES SHALL BE 4 INCHES.</p> |
| 7 | <p>LUMP SUM ITEM THIS QUANTITY INCLUDES ALL MATERIALS ASSOCIATED WITH DETAIL B ON SHEET D.01. THIS ITEM INCLUDES ALL MATERIALS TO BUILD THE PLANK WALL, FOAM BOARD, GRANULAR MATERIAL OF APPROXIMATE 14 SQ. FEET AND DEPTH OF NO MORE THAT 2 FEET. INCLUDES SAW CUTTING AND REMOVING OF EXISTING CONCRETE PAD, AND PARTIAL STAIR LANDING. INCLUDES 6 INCH PCC APPROXIMATE 14 SQ. FEET. CONTRACTOR SHALL DOWEL INTO EXISTING STEPS.</p> |

DIVISION INFORMATION

DIVISION 1 UPPER PARKING LOT

CONTRACTOR SHALL REMOVE, HAUL AND DISPOSE OF APPROXIMATELY 490 SY OF CONCRETE/ASPHALT WITHIN THE PROJECT LIMITS. CONTRACTOR WILL CORE OUT APPROXIMATELY 130 CY OF UNWANTED MATERIAL BELOW PAVEMENT AND PLACE/COMPACT 6 INCHES OF GRANULAR SUBBASE. CONTRACTOR WILL HAUL, PLACE AND COMPACT APPROXIMATELY 186 TONS OF GRANULAR SUBBASE BEFORE CONCRETE BEING POURED. CONTRACTOR WILL PLACE A MINIMUM 6 INCHES OF PORTLAND CEMENT CONCRETE CLASS C, WITH A CLASS 3 DURABILITY. THERE IS APPROXIMATELY 490 SY OF CONCRETE WITH THE PROJECT LIMITS. CONTRACTOR WILL PLACE No. 4 REBAR ON 3 FOOT CENTER GRID WITHIN THE CONCRETE. CONTRACTOR WILL DOWEL REBAR TO EXISTING PAVEMENTS. ONCE CONCRETE IS CURED THE CONTRACTOR SHALL USE EITHER A WATER-BOURNE OR SOLVENT BASED 4 INCH WIDE PAVEMENT MARKINGS. THIS AREA ALSO INCLUDES CONSTRUCTING THE UPPER LANDING AREA OF THE STAIRS AND WHERE THE LIGHT FIXTURE BASE IS LOCATED. ALL MATERIALS NEEDED TO CONSTRUCT ACCORDING TO DETAIL B ON SHEET D.01 WILL BE INCIDENTAL. SEE SHEETS D.01 AND D.02 FOR LOCATIONS, ELEVATIONS AND DETAILS ASSOCIATED WITH DIVISION 1.

DIVISION 2 SIDEWALK

CONTRACTOR SHALL REMOVE, HAUL AND DISPOSE OF APPROXIMATELY 65 SY OF CONCRETE/ASPHALT WITHIN THE PROJECT LIMITS. CONTRACTOR WILL CORE OUT APPROXIMATELY 5 CY OF UNWANTED MATERIAL BELOW PAVEMENT AND PLACE /COMPACT 3 INCHES OF GRANULAR SUBBASE. CONTRACTOR WILL HAUL, PLACE AND COMPACT APPROXIMATELY 10 TONS OF GRANULAR SUBBASE BEFORE CONCRETE BEING POURED. CONTRACTOR WILL PLACE A MINIMUM 5 INCHES OF PORTLAND CEMENT CONCRETE CLASS C, WITH A CLASS 3 DURABILITY. THERE IS APPROXIMATELY 65 SY OF CONCRETE WITH THE PROJECT LIMITS. CONTRACTOR WILL DOWEL REBAR TO EXISTING PAVEMENTS. SEE SHEETS D.03 FOR LOCATIONS, ELEVATIONS AND DETAILS ASSOCIATED WITH DIVISION 2.

DIVISION 3 LOWER PARKING LOT

CONTRACTOR SHALL REMOVE, HAUL AND DISPOSE OF APPROXIMATELY 687 SY OF CONCRETE/ASPHALT WITHIN THE PROJECT LIMITS. CONTRACTOR WILL CORE OUT APPROXIMATELY 154 CY OF UNWANTED MATERIAL BELOW PAVEMENT AND PLACE/COMPACT 6 INCHES OF GRANULAR SUBBASE. CONTRACTOR WILL HAUL, PLACE AND COMPACT APPROXIMATELY 260 TONS OF GRANULAR SUBBASE BEFORE CONCRETE BEING POURED. CONTRACTOR WILL PLACE A MINIMUM 6 INCHES OF PORTLAND CEMENT CONCRETE CLASS C, WITH A CLASS 3 DURABILITY. THERE IS APPROXIMATELY 687 SY OF CONCRETE WITH THE PROJECT LIMITS. CONTRACTOR WILL PLACE No. 4 REBAR ON 3 FOOT CENTER GRID WITHIN THE CONCRETE. CONTRACTOR WILL DOWEL REBAR TO EXISTING PAVEMENTS. ONCE CONCRETE IS CURED THE CONTRACTOR SHALL USE EITHER A WATER-BOURNE OR SOLVENT BASED 4 INCH WIDE PAVEMENT MARKINGS. SEE SHEETS D.04 AND D.05 FOR LOCATIONS, ELEVATIONS AND DETAILS ASSOCIATED WITH DIVISION 3.

GENERAL NOTES:

ALL CONCRETE SHALL HAVE AIR ENTRAINMENT WITH AIR CONTENT BETWEEN 5.5% AND 8.5%. ALL JOINTS SHALL BE AS INDICATED HEREON AND OTHER DETAILS INCLUDED IN THE PLANS. JOINTS WILL BE CLEANED AND SEALED WITH HOT POURED JOINT SEALER.

GRANULAR SUBBASE SHALL BE A MODIFIED BASE GRADATION.

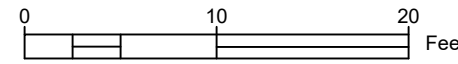
DES MOINES COUNTY WILL REMOVE LIGHT/CAMERA POLES AND ELECTRIC TO TO THE POLES. CONTRACTOR WILL REMOVE THE BASES.

DES MOINES COUNTY WILL ALSO RELOCATE STOARGE SHED IN THE NW CORNER OF THE LOWER PARKING LOT.

DES MOINES COUNTY MAY PROVIDE HELP WITH LAYOUT AND ELEVATION IF NEEDED, IF ANY SURVEY IS NEEDED THERE WILL BE A MINIMUM 48 HOUR NOTICE TO DES MOINES COUNTY.

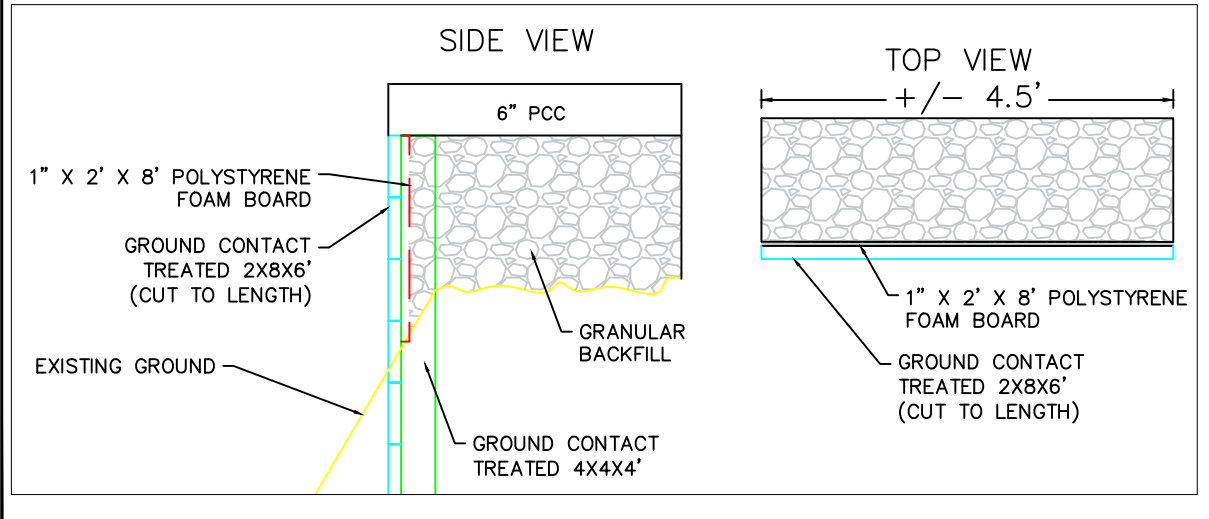
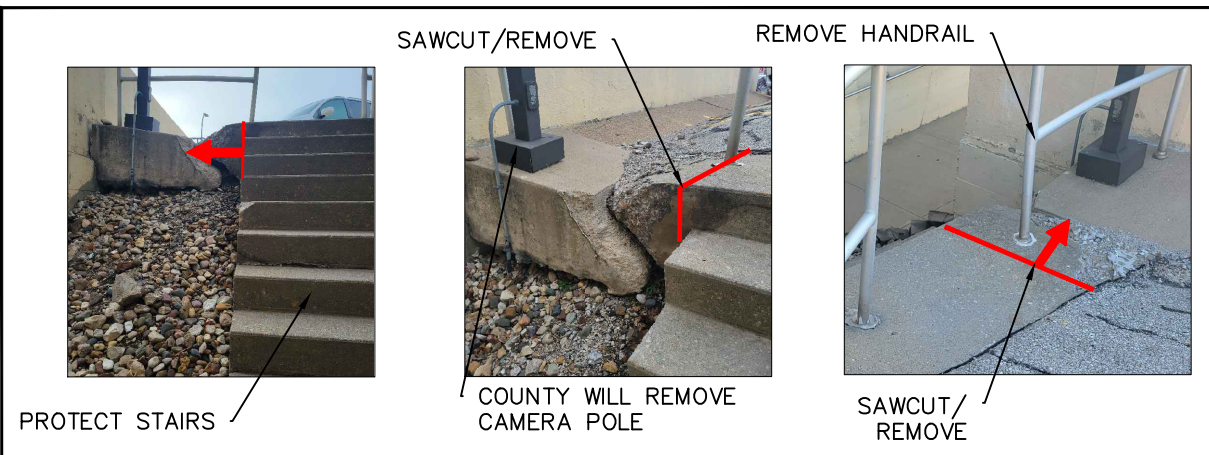
A 48 HOUR NOTICE SHALL BE GIVEN TO DES MOINES COUNTY PRIOR THE PLACEMENT OF ANY CONCRETE.

| | | | | | | |
|-------------------|--|-------------|------------------------|-------------------------|-------------|----------|
| REVISIONS | | SHEET TITLE | ESTIMATE OF QUANTITIES | | DWG FILE | DATE |
| DATE | | | | | DESIGN.dwg | JAN 2023 |
| DES MOINES COUNTY | | | PROJECT NUMBER | COURTHOUSE PARKING LOTS | STATE | IOWA |
| | | | | | FHWA REGION | 5 |
| | | | | | FISCAL YEAR | 2023 |
| | | | | | SHEET NO. | C.01 |

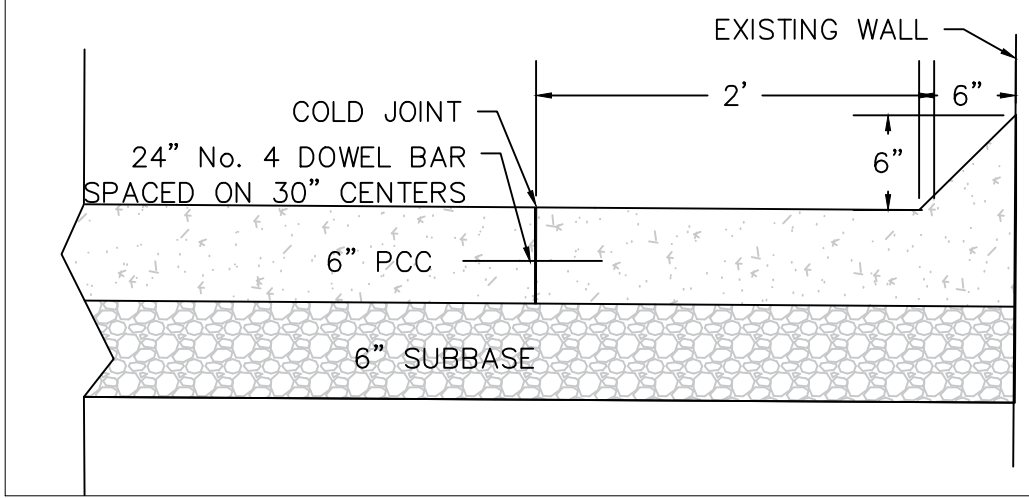


DIVISION 1 UPPER PARKING LOT

DETAIL "B"



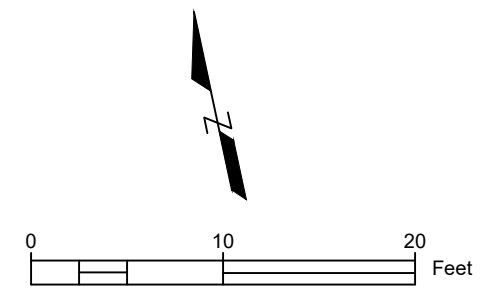
CURB DETAIL



| REVISIONS | DATE | SHEET TITLE | DWG FILE | DATE |
|-----------|------|--|-------------|-------------|
| | | DIVISION 1 UPPER PARKING LOT CONCRETE | | JAN 2023 |
| | | PROJECT NUMBER | STATE | FISCAL YEAR |
| | | COURTHOUSE PARKING LOTS | IOWA | 2023 |
| | | | FHWA REGION | SHEET NO. |
| | | | 5 | D.01 |

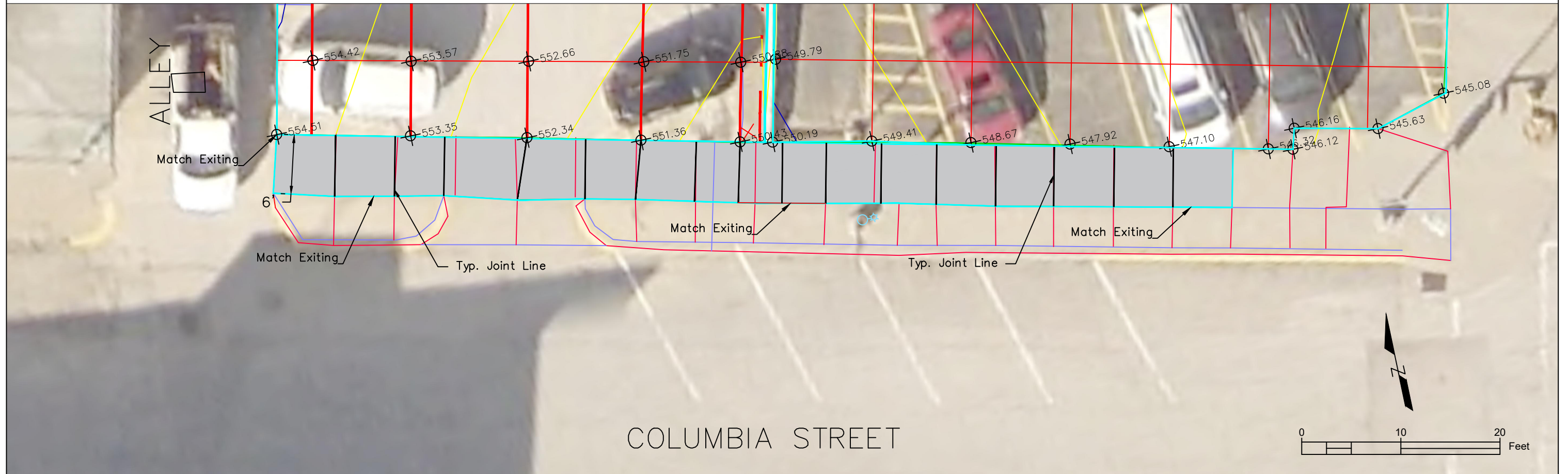
DES MOINES COUNTY

DIVISION 1 UPPER PARKING LOT PARKING LAYOUT

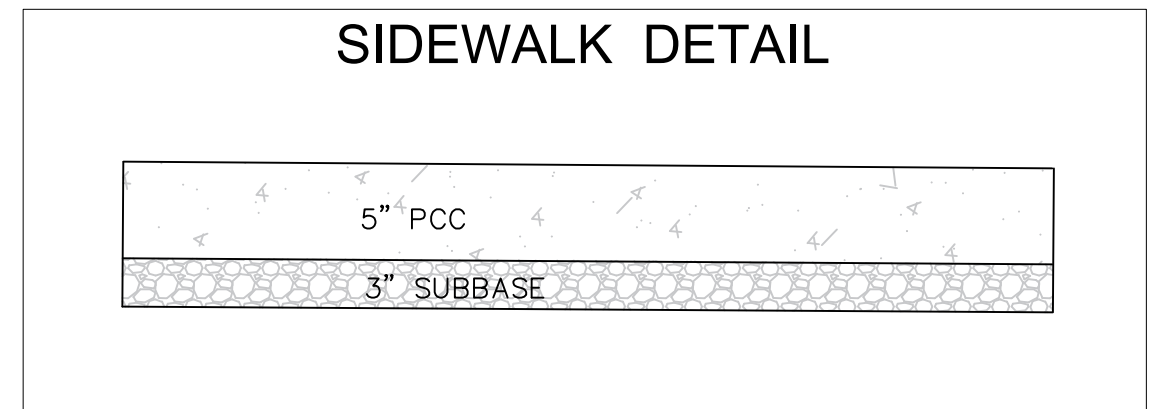


| | | | | | | | |
|-------------------|--|----------------|-----------------------------|-------|-------------|---------------------------|-----------|
| REVISIONS | | SHEET TITLE | DIVISION 1 | | | DWG FILE | DATE |
| DATE | | | UPPER PARKING LOT STRIPPING | | | DES MOINES PARK LOT STRIP | JAN 2023 |
| DES MOINES COUNTY | | PROJECT NUMBER | COURTHOUSE PARKING LOTS | STATE | FHWA REGION | FISCAL YEAR | SHEET NO. |
| | | | | IOWA | 5 | 2023 | D.02 |

DIVISION 2 SIDEWALK REPLACEMENT



Contractor to remove existing concrete. Excavate approximate 3" of material and place new granular subbase. Place new concrete at a depth of 5 inches. Match into adjacent existing concrete. Dimension of sidewalk is approximate 6 feet by 97 feet.



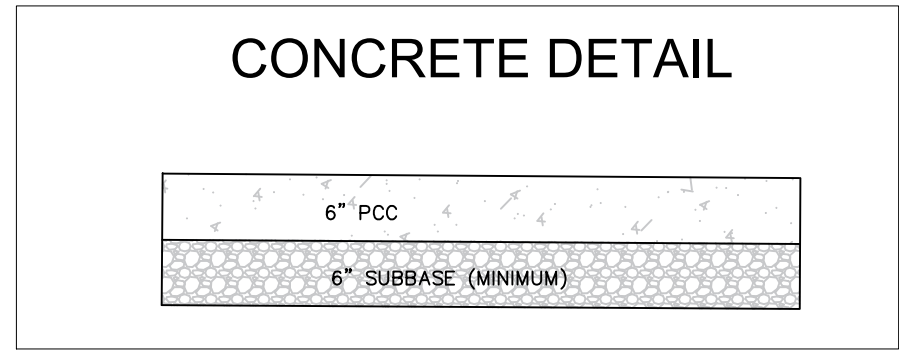
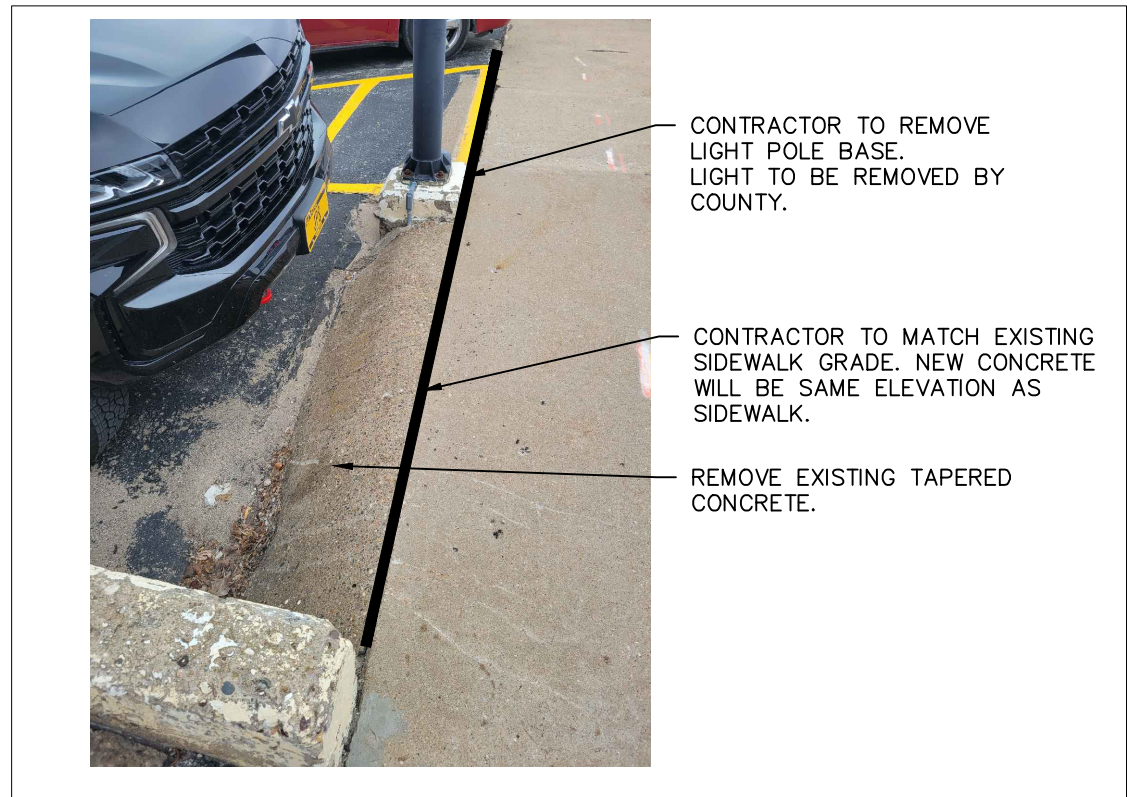
| | | | | | | | |
|-----------|--|----------------|-------------------------|-------|-------------|----------------------------|-----------|
| REVISIONS | | SHEET TITLE | DIVISION 2 – SIDEWALK | | | DWG FILE | DATE |
| DATE | | | | | | DES MOINES PARK LOT 23.dwg | JAN 2023 |
| | | PROJECT NUMBER | COURTHOUSE PARKING LOTS | STATE | FHWA REGION | FISCAL YEAR | SHEET NO. |
| | | | | IOWA | 5 | 2023 | D.03 |

DES MOINES COUNTY



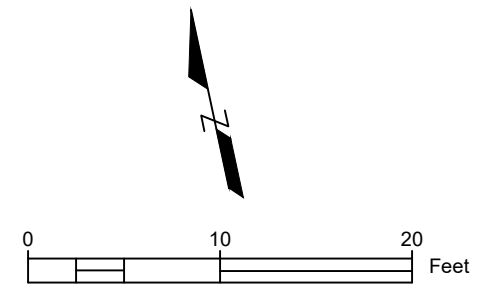
DIVISION 3 LOWER PARKING LOT

DETAIL "A"



| | | | | | | | |
|-------------------|--|--|--|----------------------------|-------------------------|-------------|------|
| REVISIONS | | SHEET TITLE | | DWG FILE | | DATE | |
| DATE | | DIVISION 3 UPPER PARKING LOT CONCRETE | | DND 000000 PARK LOT 03.dwg | | JAN 2023 | |
| DES MOINES COUNTY | | | | PROJECT NUMBER | COURTHOUSE PARKING LOTS | STATE | IOWA |
| | | | | FHWA REGION | 5 | FISCAL YEAR | 2023 |
| | | | | | | SHEET NO. | D.04 |

DIVISION 3 LOWER PARKING LOT PARKING LAYOUT



| | | | | | | |
|-------------------|--|----------------|-----------------------------|-------|---------------------------|-------------|
| REVISIONS | | SHEET TITLE | DIVISION 3 | | DWG FILE | DATE |
| DATE | | | UPPER PARKING LOT STRIPPING | | DES MOINES PARK LOT STRIP | JAN 2023 |
| DES MOINES COUNTY | | PROJECT NUMBER | COURTHOUSE PARKING LOTS | STATE | FHWA REGION | FISCAL YEAR |
| | | | | IOWA | 5 | 2023 |
| | | | | | | SHEET NO. |
| | | | | | | D.05 |