

SHERIFF PARKING LOT

DES MOINES COUNTY

DES MOINES COUNTY

SHERIFF PARKING LOT

LOCATION: DES MOINES COUNTY SHERIFF
512 N. MAIN STREET
BURLINGTON, IA 52601

INDEX OF SHEETS	
No.	Description
A.01	Title Sheet
B.01	Typical and Details
C.01	Estimate of Quantities and Reference Information
D.01	Existing Parking Lot Layout
D.02	Proposed Parking Lot Layout



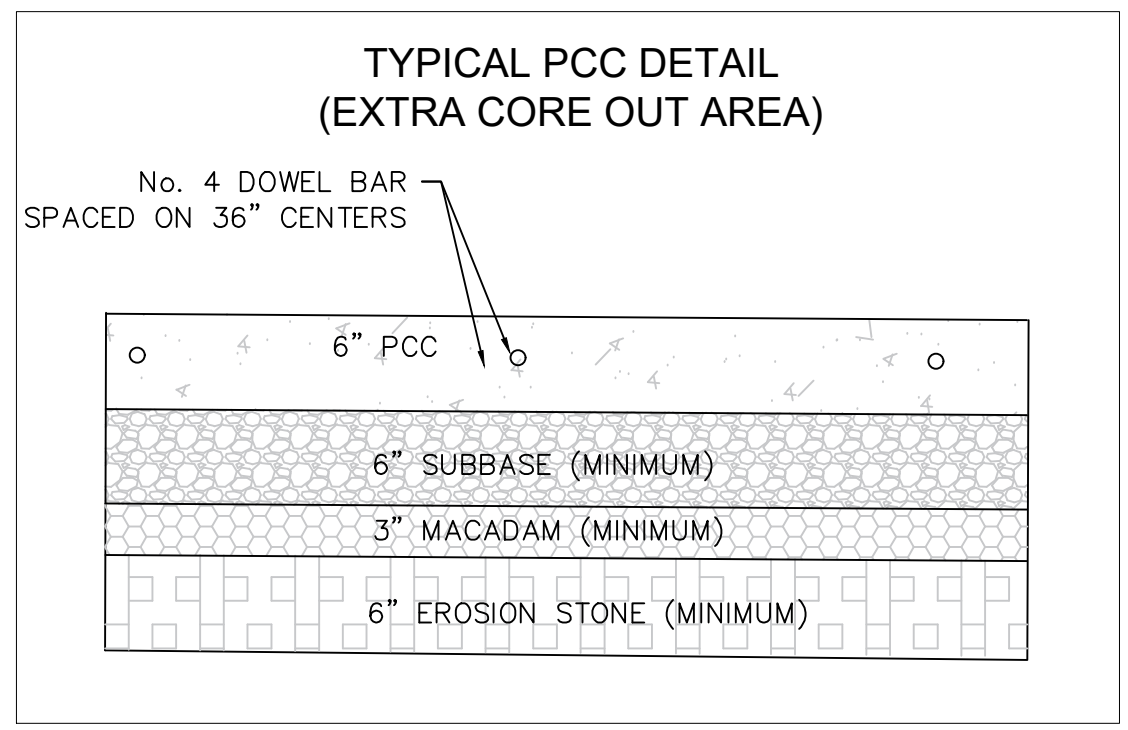
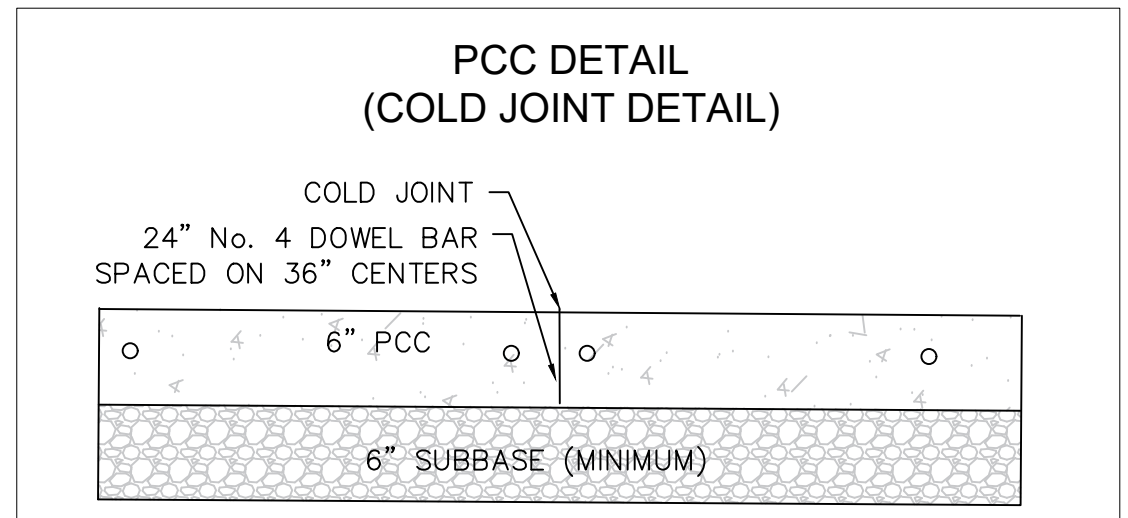
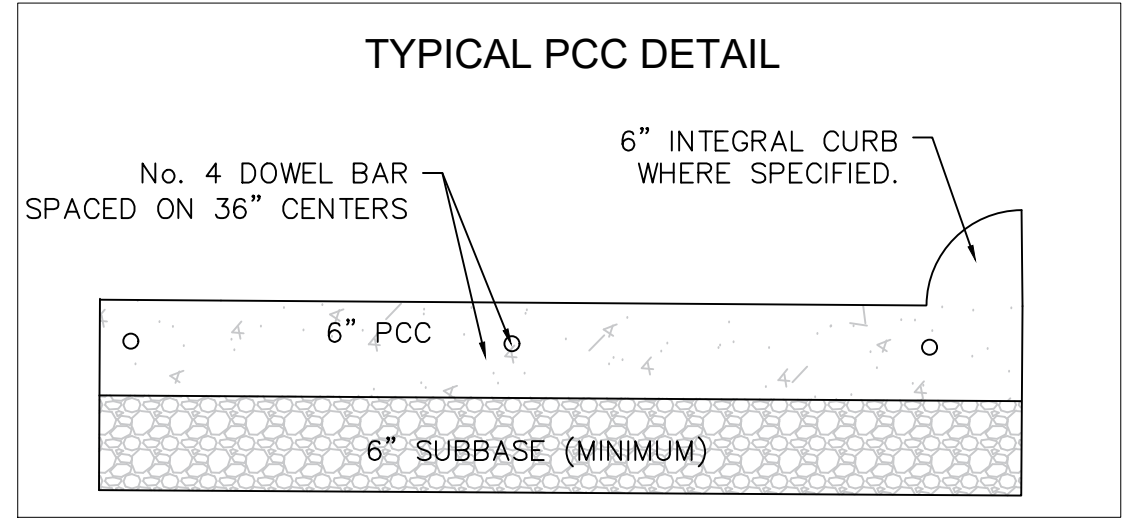
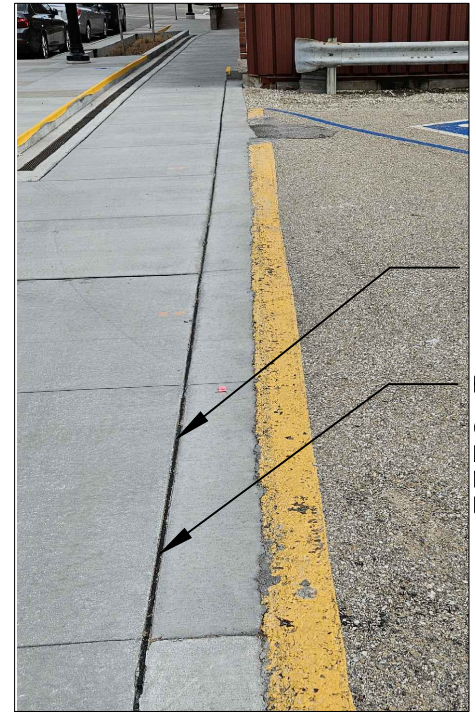
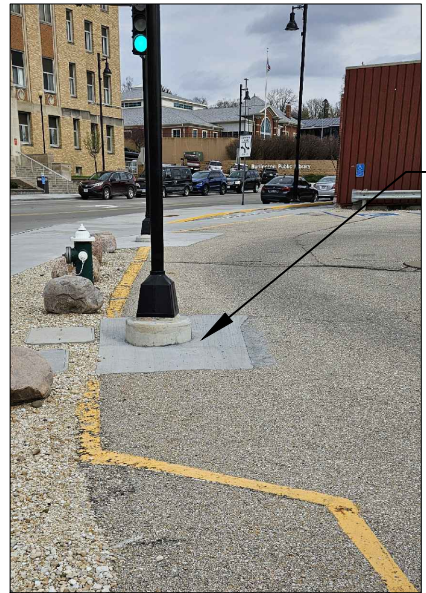
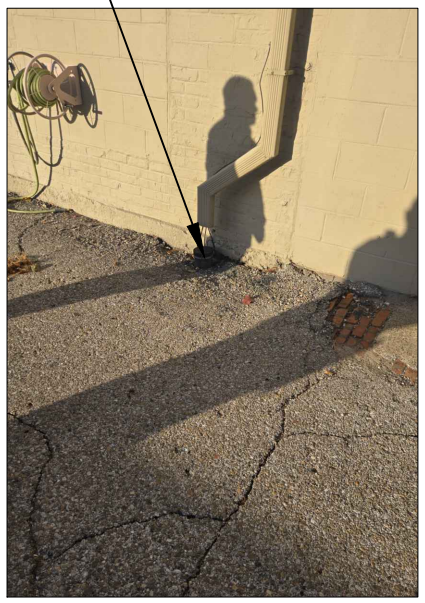
LEGEND

- UNDERGROUND FIBER OPTIC LINE — UFO —
- UNDERGROUND ELECTRIC LINE — UE —
- UNDERGROUND STORM SEWER LINE —>—>—>—
- UNDERGROUND GAS LINE — GAS —
- OVERHEAD LINE — OHE —

Scales: As Noted

STANDARD SPECIFICATION NOTE
"Refer to the Proposal Form for list of applicable specifications"





REVISIONS		SHEET TITLE	TYPICAL & DETAIL SHEET			DWG FILE		DATE
DATE						DESIGN.dwg		MARCH 2025
DES MOINES COUNTY			PROJECT NUMBER	DES MOINES COUNTY SHERIFF'S PARKING LOT	STATE	FHWA REGION	FISCAL YEAR	SHEET NO.
					IOWA	5	2025	B.01

ESTIMATED PROJECT QUANTITIES				
ITEM. NO.	ITEM CODE	ITEM DESCRIPTION	UNITS	TOTAL
1	2102-2710090	EXCAVATION, CLASS 10, WASTE	SY	2,689.18
2	2210-0475290	MACADAM STONE BASE	TON	60
3	2111-8174100	GRANULAR SUBBASE	SY	2,689.18
4	2301-1033060	STANDARD OR SLIP FORM PORTLAND CEMENT CONCRETE PAVEMENT CLASS C, CLASS 3 DURABILITY, 6 IN.	SY	2,674.6
5	2507-8029000	EROSION STONE	TON	121
6	2510-6745850	REMOVAL OF PAVEMENT	SY	2,689.18
7	2527-9263109	PAINTED PAVEMENT MARKINGS, WATERBORNE OR SOLVENT-BASED	STA	19.40
8	2599-9999005	EACH ITEM (BOLLARD)	EACH	6

ESTIMATE REFERENCE INFORMATION	
Item No.	Description
1	<u>EXCAVATION, CLASS 10, WASTE</u> CONTRACTOR IS RESPONSIBLE FOR EXCAVATING, LOADING, AND HAULING WASTE MATERIAL THAT WILL BE EXCAVATED ONCE PAVEMENT HAS BEEN REMOVED. DEPTH COULD VARY DEPENDING ON EXISTING SURFACE THICKNESS. CONTRACTOR IS TO EXCAVATE MATERIAL TO BOTTOM OF GRANULAR SUBBASE DEPTH. NO OVERPAYMENT FOR OVERHAUL WILL BE ALLOWED. TYPE "A" COMPACTION WILL BE REQUIRED. APPROXIMATE MATERIAL FOR PARKING LOT IS 592CY PLUS AN ADDITIONAL 128CY IN THE EXRTA CORE OUT AREA.
2	<u>MACADAM STONE BASE</u> CONTRACTOR IS RESPONSIBLE FOR HAULING, PLACING, AND COMPACTING OF MACADAM STONE BASE. THIS ITEM IS INTENDED TO CAP THE EROSION STONE BEFORE THE GRANULAR SUBBASE IS PLACED. A MINIMUM OF 3 INCHES SHALL BE PLACED. NO RECYCLED CONCRETE WILL BE ALLOWED.
3	<u>GRANULAR SUBBASE</u> CONTRACTOR IS RESPONSIBLE FOR HAULING, PLACING, AND COMPACTING OF SUBBASE. A MINIMUM OF 6 INCHES SHALL BE PLACED. ROUGHLY CALCULATED THIS WILL BE A RANGE OF 825 TO 875 TONS . NO RECYCLED CONCRETE WILL BE ALLOWED.
4	<u>STANDARD OR SLIP FORM PORTLAND CEMENT CONCRETE PAVEMENT CLASS C, CLASS 3 DURABILITY, 6 IN.</u> REFER TO D SHEETS FOR DETAILS AND LOCATIONS. INCIDENTAL TO THIS ITEM IS A GRID OF No. 4 REBAR SHALL BE PLACED ON 3 FOOT CENTER. ADDITIONAL REBAR TO BE USED TO DOWEL INTO EXISTING PAVEMENT, SEE SPECIAL CURB DETAIL. CONCRETE SHALL HAVE AIR ENTRAINMENT WITH AIR CONTENT BETWEEN 5.5% AND 8.5%. ALL JOINTS SHALL BE AS INDICATED HEREON AND OTHER DETAILS INCLUDED IN THE PLANS. JOINTS WILL BE CLEANED AND SEALED WITH HOT POURED JOINT SEALER. REFER TO IOWA DOT STANDARD SPECIFICATION 4136. CONCRETE SHALL BE A CLASS C MIX WITH A CLASS 3 DURABILITY ROCK. INCIDENTAL IS PLACING ½” EXPANSION JOINT ALONG THE BUILDING AND SIDEWALK. ALSO INCLUDES PLACING 115 FEET OF 6” CURB AND GUTTER.
5	<u>EROSION STONE</u> CONTRACTOR IS RESPONSIBLE FOR HAULING, AND PLACING EROSION STONE. THE QUANTITY IS BASED ON 7 INCHES THICK (ONE LAYER OF ERSOSION STONE IN THE EXTRA CORE OUT AREA. SEE LOCATION ON THE D SHEETS.
6	<u>REMOVAL OF PAVEMENT</u> THIS QUANTITY INCLUDES REMOVING ALL CONCRETE AND ASPHALT PAVEMENT WITHIN THE PROJECT LIMITS. CONTRACTOR WILL REMOVE AND DISPOSE OF REMOVED MATERIAL.
7	<u>PAINTED PAVEMENT MARKINGS, WATERBOURNE OR SOLVENT-BASED</u> REFER TO D SHEETS FOR DETAILS AND LOCATIONS. WIDTH OF PAINTED LINES SHALL BE 4 INCHES. COUNTY WILL ASSIST WITH LAYOUT.
8	<u>EACH ITEM (BOLLARDS)</u> CONTRACTOR TO INSTALL 8 ” BOLLARDS, WITH 3 FOOT MINIMUM IN GROUND AND 5 FOOT ABOVE FINISH SURFACE. BOLLARDS SHALL CONSIST OF STEEL TUBING FILLED WITH CONCRETE AND A YELLOW PLASTIC COVER SHALL BE PLACED OVER THE STEEL PORTION SETTING ON THE FINISHED SLAB. SEE D.02 FOR LOCATIONS.

GENERAL NOTES:

THERE WILL BE TWO STAGES OF THIS PROJECT. A LINE AT THE SOUTHEAST CORNER OF THE SHERIFF’S OFFICE BUILDING PROJECTING DIRECTLY EAST WILL BE THE STAGING LINE. THE CONTRACTOR SHALL DO ALL CONCRETE WORK SOUTH OF THIS LINE FIRST, LEAVING THE PARKING SPACES ALONG THE ALLEY OPEN FOR THE SHERIFF’S VEHICLES. ONCE THE SOUTH PORTION IS COMPLETED THEN THE CONTRACTOR SHALL WORK NORTH OF THE STAGING LINE ALONG THE BUILDING AND THROUGH THE ALLEY. SEE D SHEETS FOR LOCATION.

EVEN THOUGH UTILITIES ARE SHOWN ON THE D SHEETS THE CONTRACTOR SHALL STILL DO AN IOWA ONE CALL.

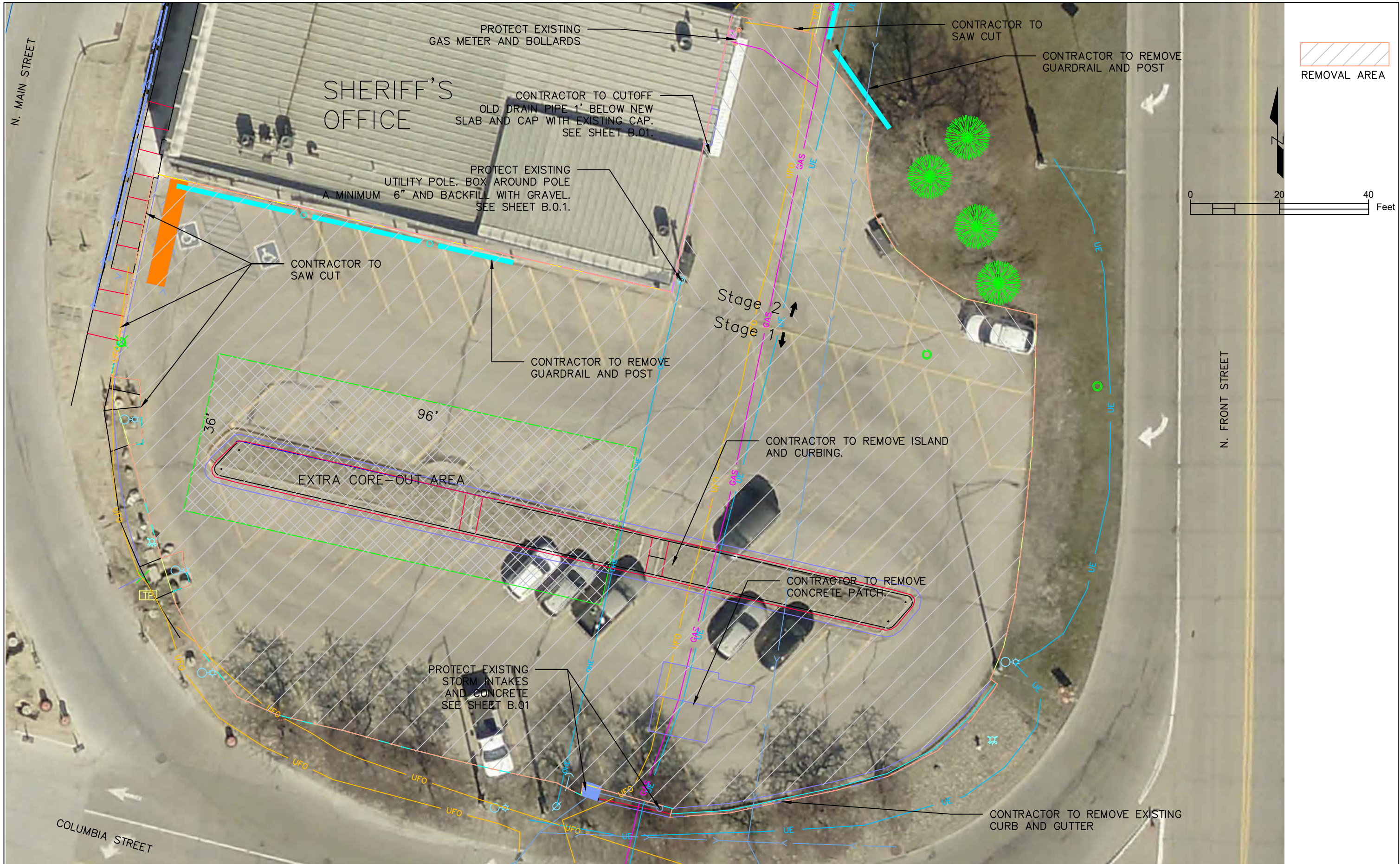
DES MOINES COUNTY MAY PROVIDE HELP WITH LAYOUT AND ELEVATION IF NEEDED, IF ANY SURVEY IS NEEDED THERE WILL BE A MINIMUM 48 HOUR NOTICE TO DES MOINES COUNTY.

A 48 HOUR NOTICE SHALL BE GIVEN TO DES MOINES COUNTY PRIOR THE PLACEMENT OF ANY CONCRETE.

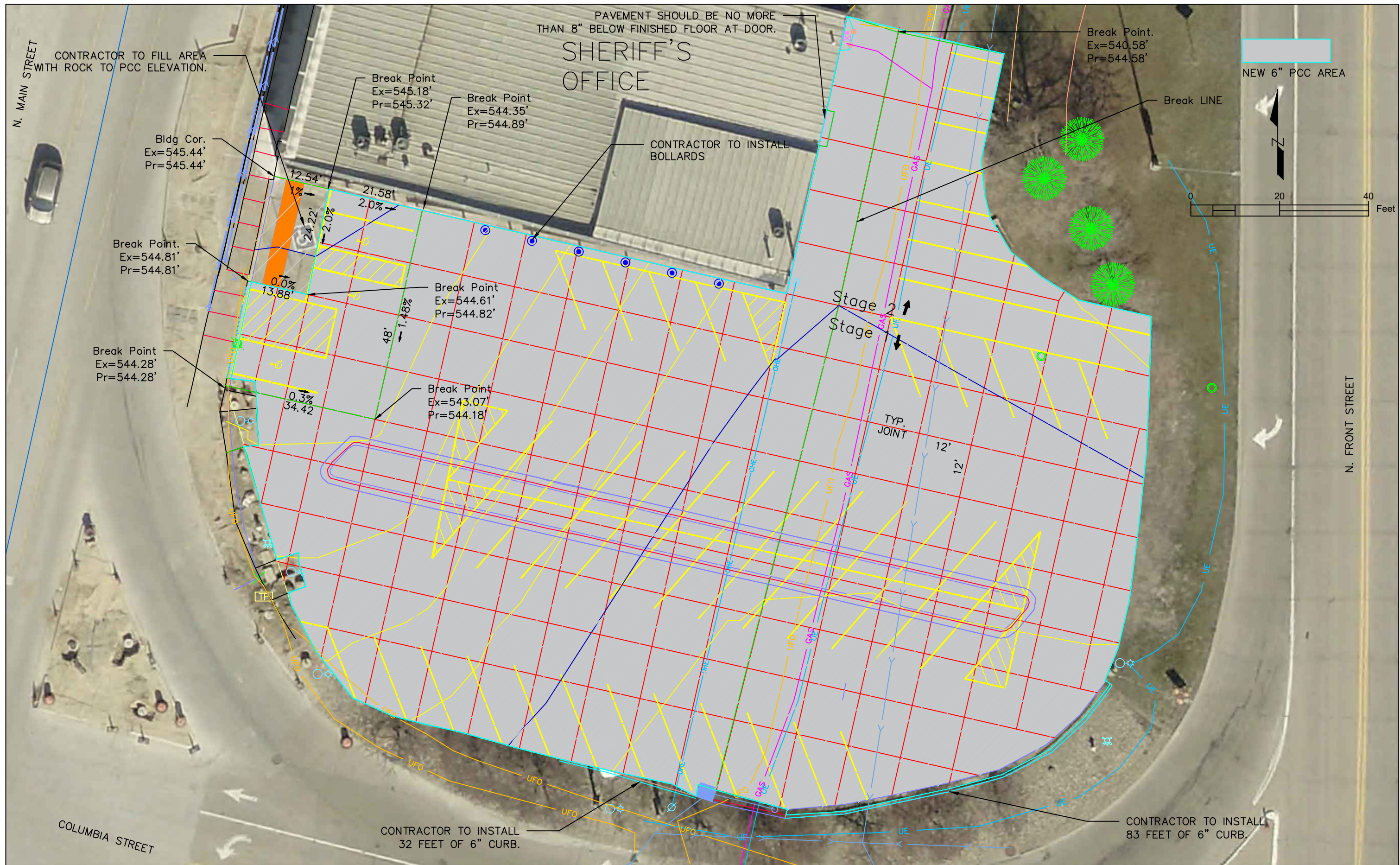
CONTRACTOR SHALL BE RESPONSIBLE TO REPOUR/REPLACE ANY DAMAGED CONCRETE/ITEMS IMMEDIATELY ADJACENT TO REMOVAL LIMITS.

CONTRACTOR SHOULD NOTE GRADE DETAILS ON SHEET D.02 IN NORTHWEST CORNER OF PARKING LOT FOR HANDICAP PARKING AREA.

	REVISIONS				SHEET TITLE		ESTIMATE OF QUANTITIES		DWG FILE		DATE	
	DATE								DESIGN.dwg		MARCH 2025	
DES MOINES COUNTY					PROJECT NUMBER		DES MOINES COUNTY SHERIFF'S PARKING LOT		STATE	FHWA REGION	FISCAL YEAR	SHEET NO.
										5	2025	C.01



REVISIONS		SHEET TITLE	EXISTING PLAN			DWG FILE	DATE	
DATE						PARKINGLOT 2022.dwg	MARCH 2025	
DES MOINES COUNTY			PROJECT NUMBER	DES MOINES COUNTY SHERIFF'S PARKING LOT	STATE	FHWA REGION	FISCAL YEAR	SHEET NO.
					IOWA	5	2025	D.01



REVISIONS			SHEET TITLE		DWG FILE		DATE	
DATE			PROPOSED		PARKINGLOT 22.dwg		MARCH 2025	
DES MOINES COUNTY			PROJECT NUMBER	DES MOINES COUNTY SHERIFF'S PARKING LOT	STATE	IOWA	FHWA REGION	5
					FISCAL YEAR	2025	SHEET NO.	D.02